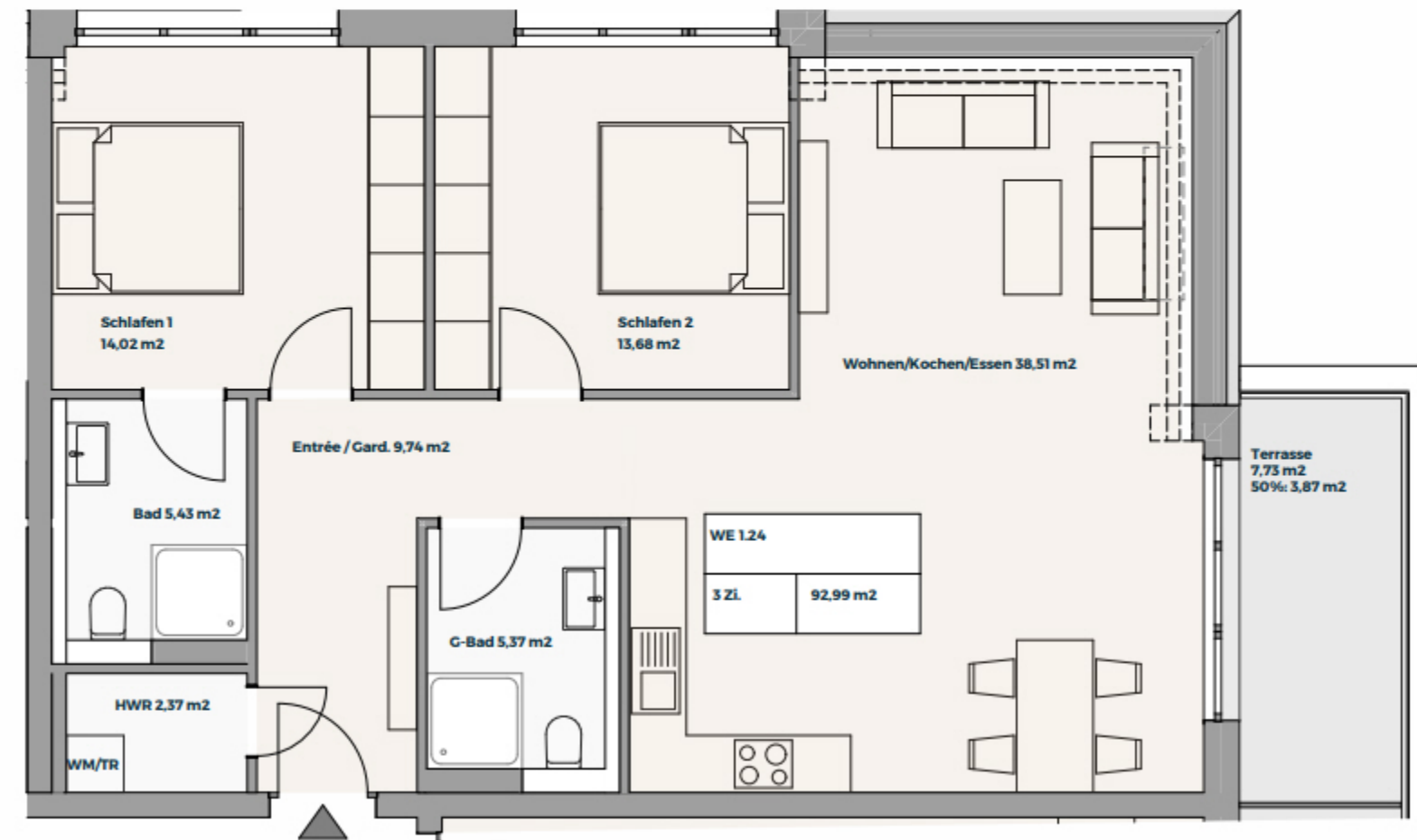
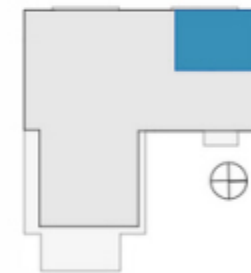


# 3. Obergeschoss

## WE 1.24 3-Zimmer



■ Entrée / Garderobe	9,74 m <sup>2</sup>
■ Wohnen / Kochen / Essen	38,51 m <sup>2</sup>
■ Gäste-Bad	5,37 m <sup>2</sup>
■ Schlafen 1	14,02 m <sup>2</sup>
■ Schlafen 2	13,68 m <sup>2</sup>
■ HWR	2,37 m <sup>2</sup>
■ Bad	5,43 m <sup>2</sup>
■ Loggia 50 % (7,73 m <sup>2</sup> )	3,87 m <sup>2</sup>
<hr/>	
	<b>92,99 m<sup>2</sup></b>



Hinweis:  
Möblierung beispielhaft.  
Anschlüsse bedingt anpassbar.